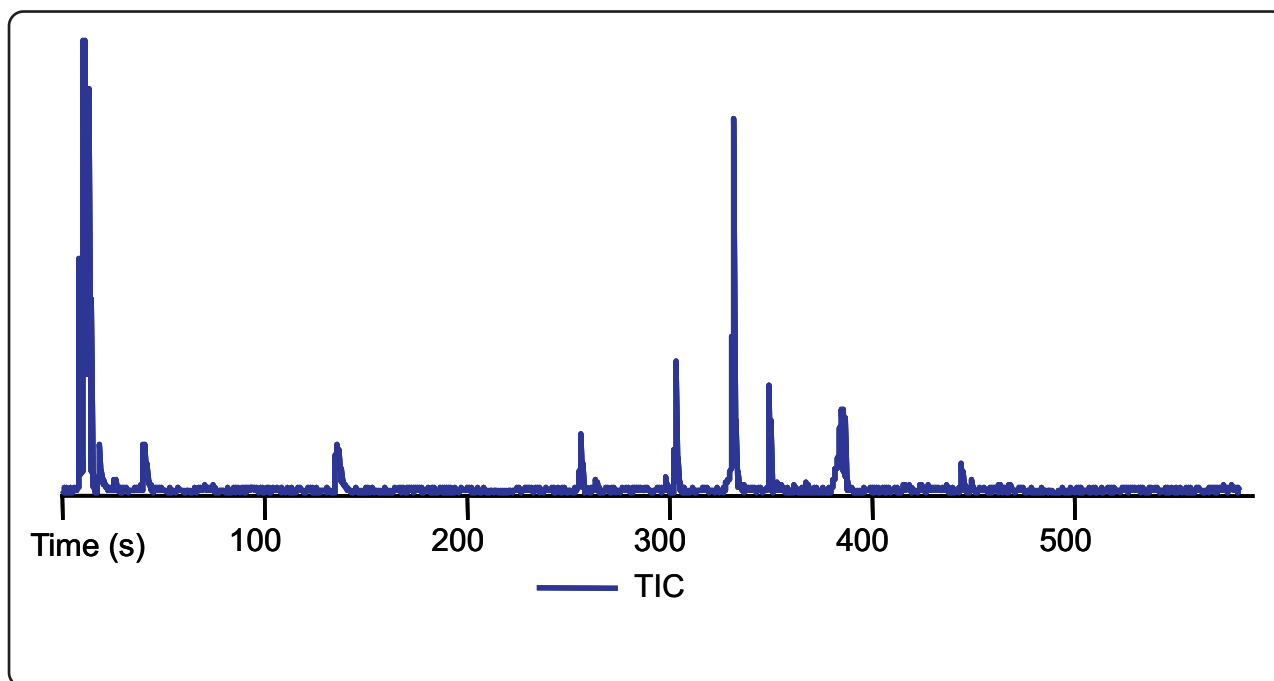


Analysis of Beer by SPME-GC-TOFMS

Life Science and Chemical Analysis Centre
LECO Corporation, Saint Joseph, Michigan USA



Total Ion Chromatogram (TIC) for a beer sample following a 30 minute SPME fiber exposure.

Column:
9.4 m x 0.18 mm x 0.2 μ m DB-5

TOFMS:
35 to 350 m/z @ 20 spectra/s

For questions on this
analysis e-mail us at:
life_science@leco.com

For a complete listing of
snapshots and application
notes visit us on the web
at www.leco.com

