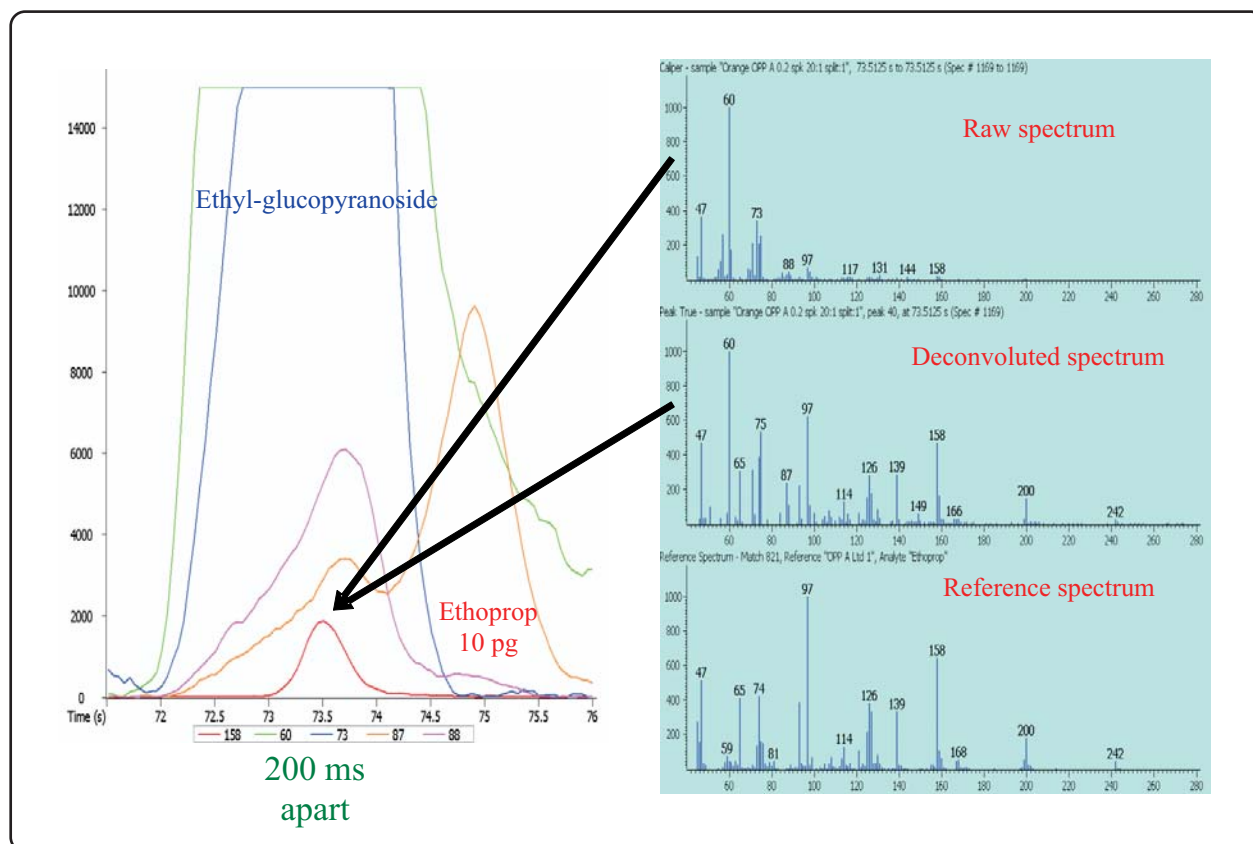


Automatic Detection of Ethoprop in Orange

Life Science and Chemical Analysis Centre
LECO Corporation, Saint Joseph, Michigan USA



Ethoprop detected in orange and clearly identified despite coelution with major interference.

Column:

5 m x 0.18 mm x 0.18 μ m Restek RTx-XLB

TOFMS:

45 to 550 m/z @ 20 spectra/s

For questions on this analysis e-mail us at:
life_science@leco.com

For a complete listing of snapshots and application notes visit us on the web at www.leco.com

