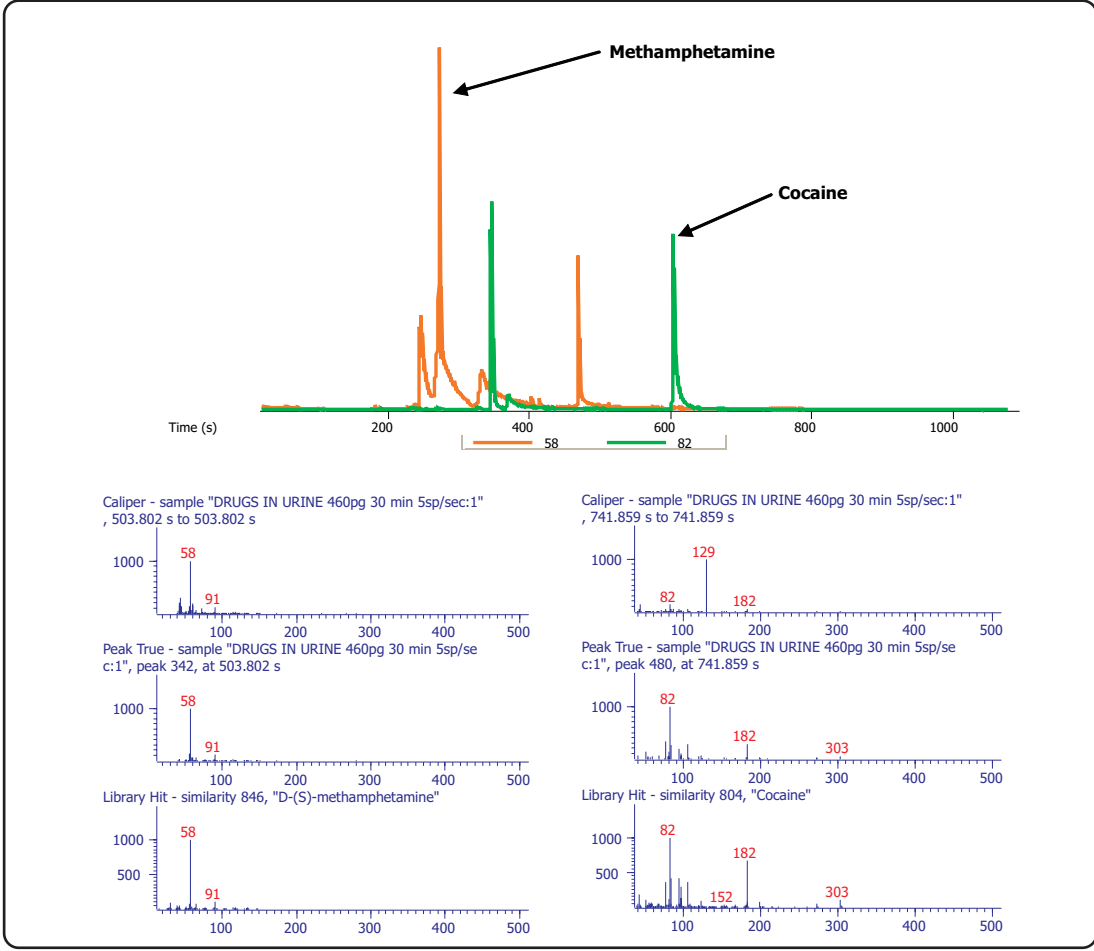


SPME-GC-TOFMS of a Nonderivatized Sample for Drugs in Urine

Life Science and Chemical Analysis Centre
LECO Corporation, Saint Joseph, Michigan USA



Extracted ion chromatograms for methamphetamine (m/z=58) and cocaine (m/z=82) of a nonderivatized urine sample with mass spectral match similarities of over 800.

Column:
20 m x 0.18 mm x 0.18 μm Rxi-5ms

TOFMS:
45 to 450 m/z @ 5 spectra/s

For questions on this analysis e-mail us at:
life_science@leco.com

For a complete listing of snapshots and application notes visit us on the web at www.leco.com

