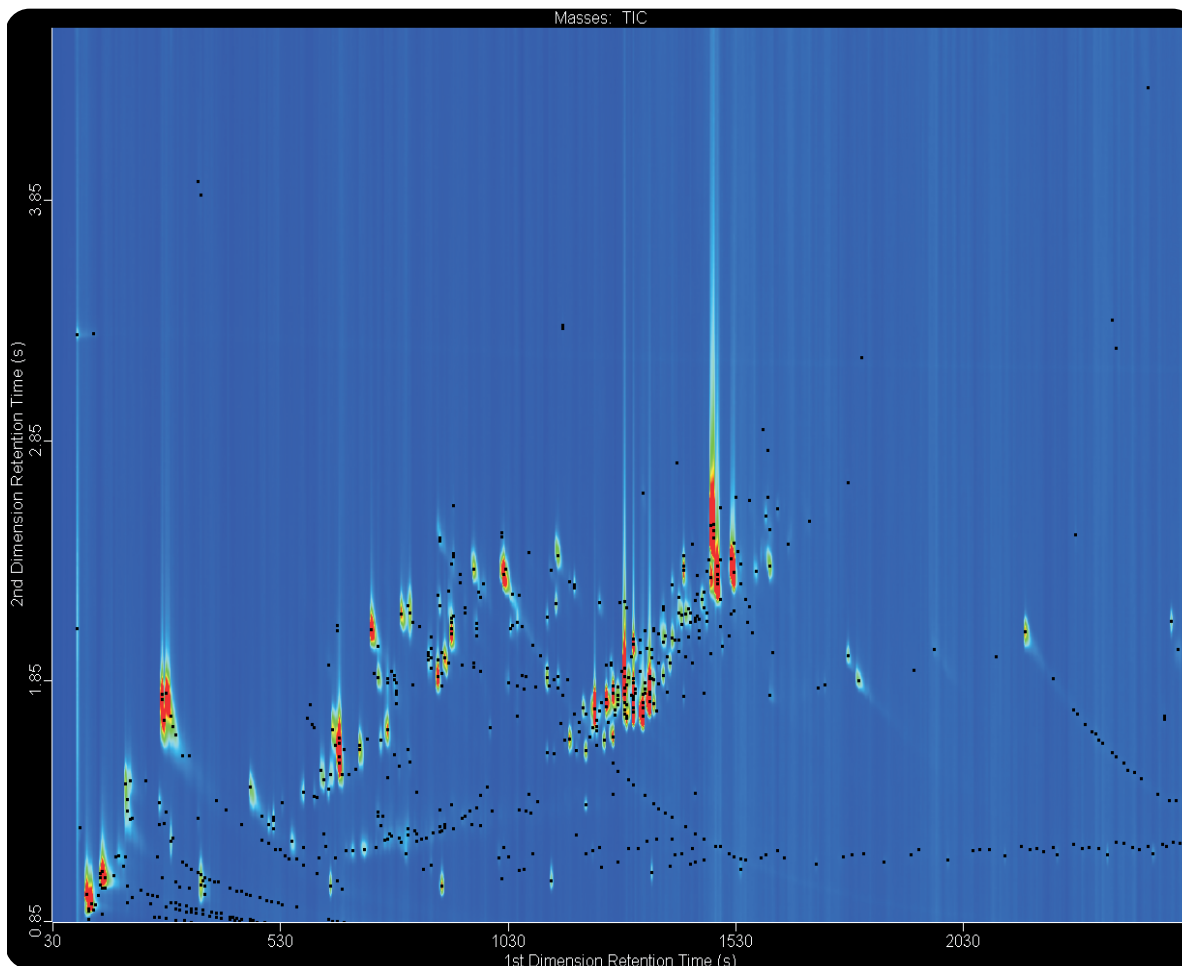


GCxGC-TOFMS Headspace Analysis of Volatile Flavor Components in a Spice

Life Science and Chemical Analysis Centre
LECO Corporation, Saint Joseph, Michigan USA



GCxGC-TOFMS Contour Plot chromatogram showing over 850 peaks found.

Columns:

30 m x 0.25 mm x 0.25 μm Rtx-1ms
1.5 m x 0.18 mm x 0.18 μm DB-17ms

TOFMS:

40 to 400 m/z @ 200 spectra/s

For questions on this analysis
e-mail us at: life_science@leco.com

For a complete listing of snapshots
and application notes visit us on the
web at www.leco.com

