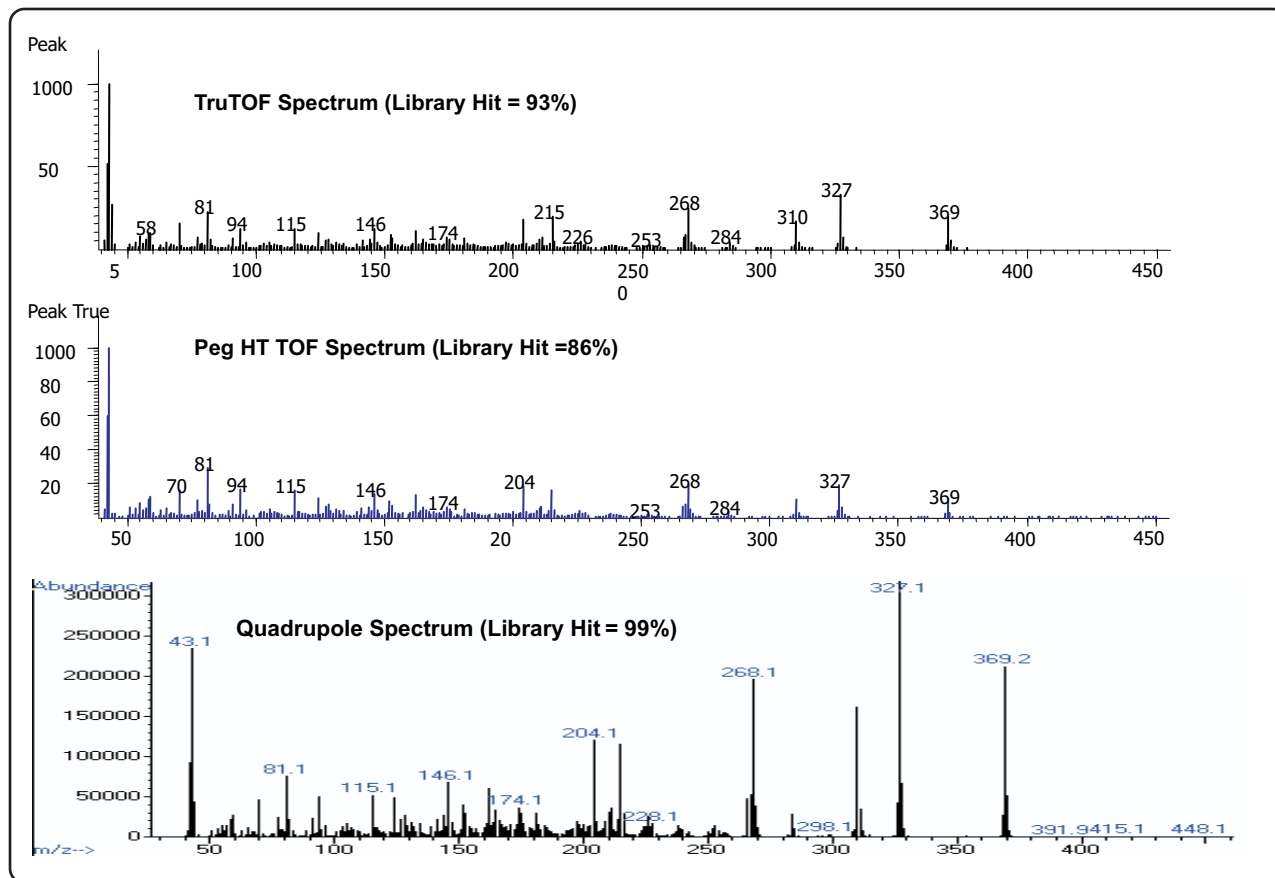


Comparison of TOF and Quadrupole MS Spectra for GCMS Analysis of Heroin

Life Science and Chemical Analysis Centre
LECO Corporation, Saint Joseph, Michigan USA



For questions on this analysis e-mail us at:
life_science@leco.com

For a complete listing of snapshots and application notes visit us on the web at www.leco.com

